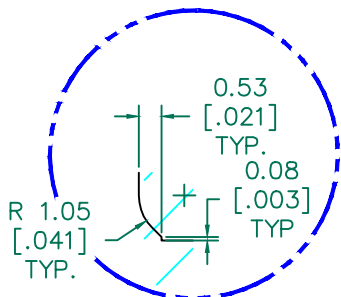


SEE DETAIL "A"

SECTION A-A



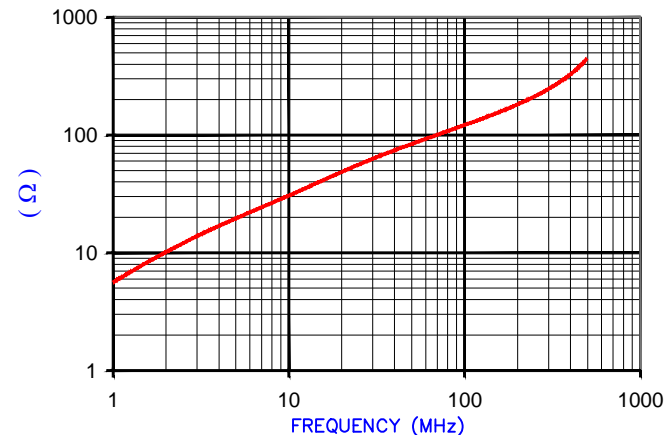
DETAIL "A"
CHAMFER
SCALE=6:1

UNCONTROLLED DOCUMENT

RoHS

IMPEDANCE (Z)			
Frequency	25 MHz	100 MHz	300 MHz
Nominal (REF)	56 Ω	122 Ω	247 Ω
Minimum	- Ω	98 Ω	- Ω

Z vs. FREQUENCY
(REF. ONLY)



AGILENT E4991A Impedance/Material Analyzer
HP 16092A-Test Fixture

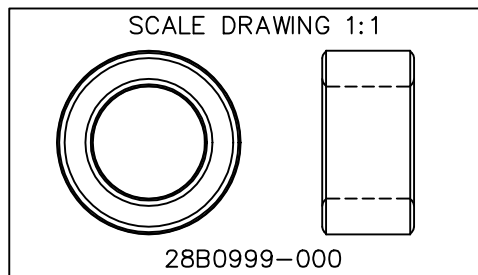
FERRITE CORE DIMENSIONS (SPEC): mm [in]

A	25.40 [1.000]	±	0.46 [0.018]
B	15.49 [.610]	±	0.30 [0.012]
C	12.70 [.500]	±	0.25 [0.010]

WEIGHT/1000 19.73 kgs [43.50 Lbs]

NOTES: UNLESS OTHERWISE SPECIFIED

1. COSMETIC SPECIFICATION REFER TO WI-QA-038.



DIMENSIONS ARE IN mm [INCHES].				This print is the property of Laird Tech. and is loaned in confidence subject to return upon request and with the understanding that no copies shall be made without the written consent of Laird Tech. All rights to design or invention are reserved.		Laird	
H	UPDATE THE LOGO	05/13/15	QIU	PROJECT/PART NUMBER:		REV	DRAWN BY:
G	UPDATE COMPANY LOGO	12/28/12	QIU	28B0999-000		H	DJB
F	UPDATE COMPANY LOGO	05/09/07	TMB	DATE:	07/03/90	SCALE:	2:1
E	CHANGE PRINT FORMAT CHANGE Z SPECS AND ADD CURVE CHANGE P/N TO -000 REMOVE COATING SPECS & NOTES	07/17/03	TMB	CAD #	28B0999-000-H	TOOL #	B0999
REV	DESCRIPTION	DATE	INT	MATERIAL: FERRITE			