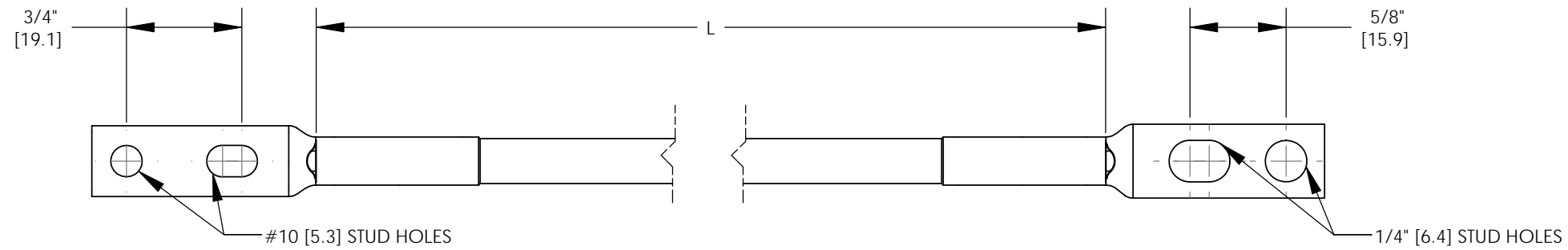


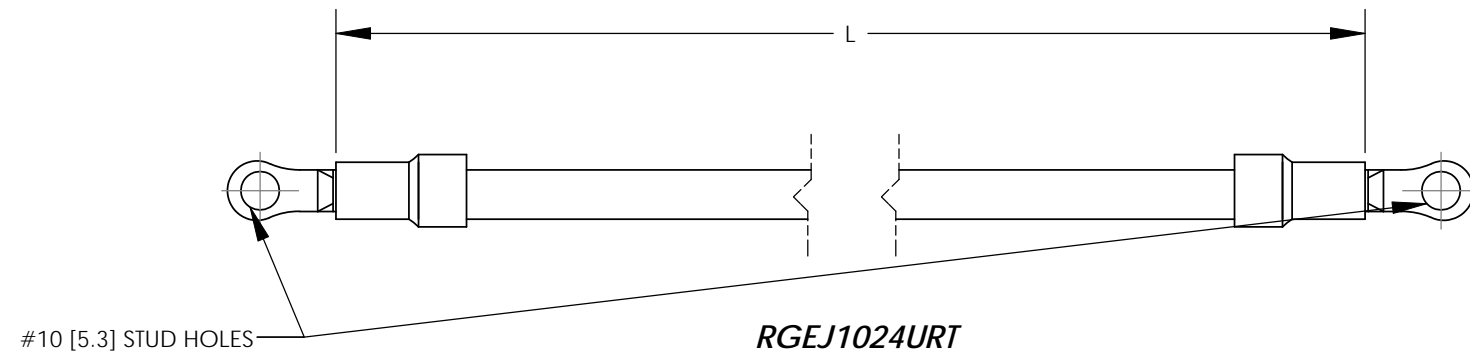
NOTES:

- PART NUMBERS: RGEJ660U, RGEJ696U, RGEJ1024URT
- DIMENSIONS IN INCHES, DIMENSIONS IN BRACKETS ARE MILLIMETERS



**RGEJ660U, RGEJ696U**

FACTORY CRIMPED #6 AWG/16mm SQ. JUMPER WIRE ASSEMBLY (QTY. 1) INCLUDES:  
 LCC6-14JAW (QTY. 1)  
 LCC6-10ABW (QTY. 1)  
 #6 AWG/16mm SQ. WIRE - GREEN/YELLOW INSULATION



**RGEJ1024URT**

FACTORY CRIMPED #10 AWG/6mm SQ. JUMPER WIRE ASSEMBLY (QTY. 1) INCLUDES:  
 PV10-10RX (QTY. 2)  
 #10 AWG/6mm SQ. WIRE - GREEN/YELLOW INSULATION

PANDUIT PART NUMBER	L IN [mm]
RGEJ660U	60.00 [1524.0]
RGEJ696U	96.00 [2438.4]
RGEJ1024URT	24.00 [609.6]

REV	DATE	BY	CHK	DESCRIPTION	ECN	-R	SUP
00	2/11	JHNU	JHNU	DRAWING RELEASED	10J021BB-JC	FLD	FLD

10J021BB-JC/00A

**PANDUIT CORP.** TINLEY PARK, ILLINOIS

STRUCTURED GROUND EQUIPMENT GROUNDING JUMPERS  
 (RGEJ660U, RGEJ696U, RGEJ1024URT)  
 CUSTOMER DRAWING

UNLESS OTHERWISE SPECIFIED  
 DIMENSIONAL TOLERANCES ARE:  
 (.X) ± ... (.XXX) ± ...  
 (.XX) ± ... ANGLES ± ...

UNLESS OTHERWISE SPECIFIED,  
 ALL DIMENSIONS ARE GIVEN IN  
 INCHES, THIRD ANGLE PROJECTION

DRAWN BY  
 JHNU  
 DATE  
 2/11  
 CHK'D

MAT'L:

SEE NOTES

SCALE  
 NONE

DRAWING NO / CAD FILE  
 10J021BB-JC  
 DWG  
 B  
 SIZE